

TECHNICAL INFO

Style 650 is a PTFE impregnated fiberglass fabric engineered for the harsh environments found in many industrial facilities including acid plants, paper mills, and petrochemical plants.

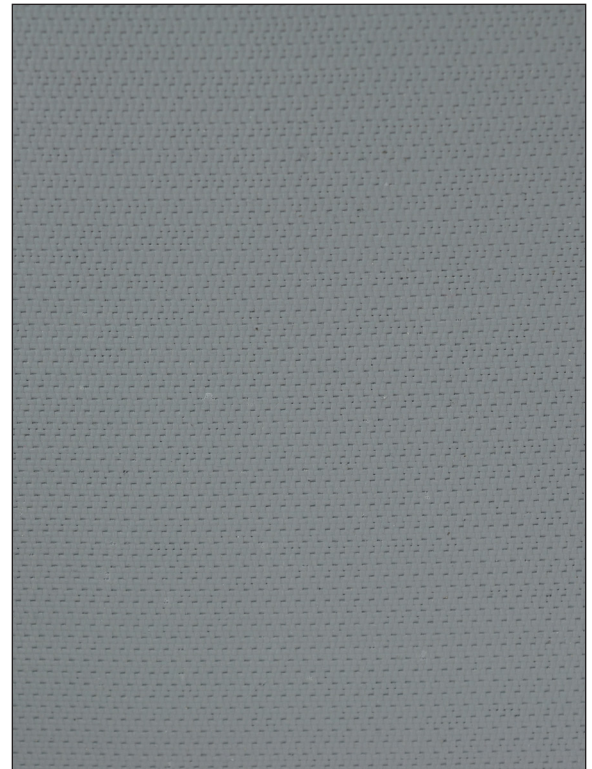
Designed for standard duty, this abrasion resistant jacketing has proven very durable in removable insulation pad service. Style 650 sews easily and has excellent non-flammability properties.

Benefits

- Oil resistant
- Water resistant
- High temperature resistant
- Easily fabricated
- Abrasion resistant
- Rugged construction

Applications

- Equipment covers
- Splash shields
- Expansion joints
- Flange and valve covers
- Safety clothing



Property Data

Weight: 17.0 oz./sq. yd. nominal.

Thickness: 0.016 in. nominal.

Width: 60 in. nominal.

Tensile Strength: 410 lb./in. avg. warp, 375 lb./in. avg. fill.

Materials: Woven fiberglass and PTFE resins.

Color: Gray.

Upper Use Temperature: 600°F.

Trapezoidal Tear Strength: 20 lbs. avg. warp, 20 lbs. avg. fill.

Non-flammability: V-O rating; UL 94, Vertical Burning Test.

All statements herein are expressions of opinion, which we believe to be accurate and reliable, but are presented without guarantee or responsibility on our part. Anyone intending to use recommendations contained in this publication concerning equipment, processing techniques or products should first satisfy himself that the recommendations are suitable for his use and meet all appropriate safety and health standards.

For more information on GLT Products, please call toll-free at 800.874.1748 or online at www.gltproducts.com.



Innovative Insulation Systems

HEADQUARTERS:

6810 Cochran Road | Solon OH 44139 | 440.914.1122 | 440.914.1133 Fax | **1.800.874.1748**

DISTRIBUTION CENTERS:

Ohio: 6810 Cochran Road | Solon OH 44139 | 440.914.1122

North Carolina: 501 West Camel Street | Greensboro, NC 27401 | 1.800.551.9760

California: 4113 Gold River Lane | Stockton, CA 95215 | 1.800.833.4500

Texas: 8905 Market Street | Houston, TX 77029 | 1.800.874.1748