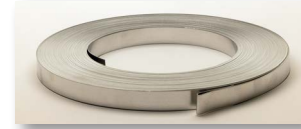


INSUL-MATE™
RPR Insul-Mate™ Strapping

STRAPPING

Insul-Mate™ strapping is slit from T304 and T316 (ASTM A-240), Aluminum alloy 3003, 3105 (ASTM B209) and Galvanized Steel G90 LFO (ASTM A-653). The edges are conditioned for safe handling. Aluminum in 3/8", 1/2" and 3/4" widths. Stainless Steel (T304 & T316) in 3/8", 1/2" and 3/4", T304 in 5/8" widths x .015" and .020" thickness. Galvanized in 1/2" and 3/4" widths x .020" thickness. Available in ribbon wound or 100# oscillated coils.

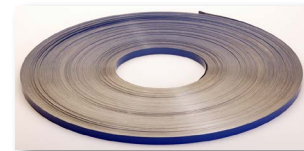


PACKAGING

ALUMINUM	STAINLESS STEEL	GALVANIZED
3/8" - 8# ctn	3/8" - 22# ctn	-
1/2" - 10# ctn	1/2" - 28# ctn	1/2" - 28# ctn
-	5/8" - 35# ctn (T304)	-
3/4" - 15# ctn	3/4" - 42# ctn	3/4" - 42# ctn

COLOR CODED STRAPPING

Insul-Mate™ color-coded strapping is designed to be used as a line identifier. Stainless steel and aluminum are coated in Industry Standard colors. Insul-Mate™ color coded stainless steel strapping is slit to 1/2" and 3/4" widths from T302/304 stainless steel and is available in ribbon wound or 100# oscillated coils. Insul-Mate™ color-coded aluminum strapping is also available in 1/2" width and is slit form ASTM B209 specification aluminum in ribbon wound coils. Both stainless steel and aluminum strapping are coated with a unique two coat baked on paint system which offers superior resistance to fading, cracking and peeling.



INDUSTRY STANDARD COLORS		
Stainless Steel	Blue/Black	No Asbestos
Stainless Steel	Blue/Blue	No Asbestos
Stainless Steel	White/Red	-
Stainless Steel	Marine Corp Green	-
Aluminum	Red/Blue	No Asbestos

Special colors available on special quote and minimum quantities.